

FLOOR PLANS



TOWER WEST



WHERE CHELSEA MEETS THE RIVER'S EDGE, ITS TALLEST TOWERS  
EMBODY THE WORLD'S HIGHEST ASPIRATIONS.



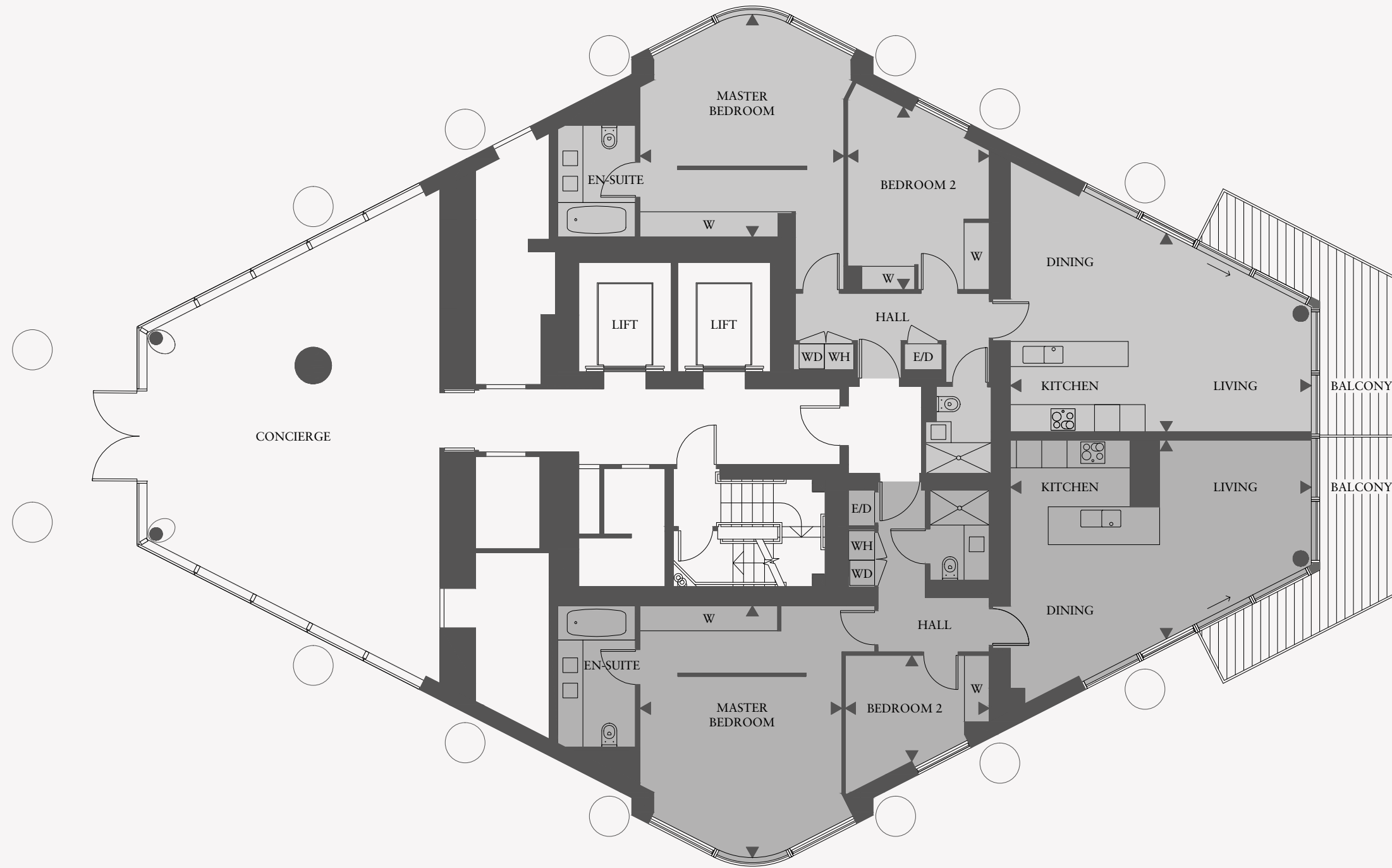
DISTINCTIVELY  
*London*



## TOWER WEST SCHEDULE OF ACCOMMODATION

APT. NO.	LEVEL	BEDROOMS	BALCONY /TERRACE	INTERNAL APARTMENT AREA SQ FT	SQ M	PAGE NO.
G1	GROUND	2	BALCONY	1002	93.1	5
G2	GROUND	2	BALCONY	1032	95.9	5
11	1	2	BALCONY	1108	102.9	7
12	1	STUDIO	—	610	56.7	6
13	1	1	—	647	60.1	7
21	2	3	BALCONY	1865	173.3	9
22	2	2	—	1150	106.8	8
23	2	2	—	927	86.1	9
31	3	3	BALCONY	1801	167.3	11
32	3	3	BALCONY	1551	144.1	10
33	3	2	BALCONY	996	92.5	11
41	4	3	BALCONY	1801	167.3	13
42	4	3	BALCONY	1551	144.1	12
43	4	2	BALCONY	996	92.5	13
51	5	3	BALCONY	1801	167.3	13
52	5	3	BALCONY	1551	144.1	12
53	5	2	BALCONY	996	92.5	13
61	6	3	BALCONY	1801	167.3	13
62	6	3	BALCONY	1551	144.1	12
63	6	2	BALCONY	996	92.5	13
71	7	3	BALCONY	1801	167.3	13
72	7	3	BALCONY	1551	144.1	12
73	7	2	BALCONY	996	92.5	13
81	8	3	BALCONY	1803	167.5	15
82	8	3	BALCONY	1559	144.8	14
83	8	2	BALCONY	1006	93.5	15
91	9	3	BALCONY	1803	167.5	15
92	9	3	BALCONY	1559	144.8	14
93	9	2	BALCONY	1006	93.5	15
101	10	4	BALCONY	2237	207.8	17
102	10	4	BALCONY	2166	201.2	16
111	11	4	BALCONY	2237	207.8	17
112	11	4	BALCONY	2166	201.2	16
121	12	4	BALCONY	2237	207.8	17
122	12	4	BALCONY	2166	201.2	16
131	13	4	BALCONY	2237	207.8	17
132	13	4	BALCONY	2166	201.2	16
141	14	4	BALCONY	2237	207.8	17
142	14	4	BALCONY	2166	201.2	16
151	15	4	BALCONY	2237	207.8	17
152	15	4	BALCONY	2166	201.2	16
161	16	4	BALCONY	2237	207.8	17
162	16	4	BALCONY	2166	201.2	16
171	17	4	BALCONY	2237	207.8	17
172	17	4	BALCONY	2166	201.2	16
181	18	4	BALCONY	2237	207.8	17
182	18	4	BALCONY	2166	201.2	16
191	19	4	BALCONY	2237	207.8	17
192	19	4	BALCONY	2166	201.2	16
201	20	4	BALCONY	2237	207.8	17
202	20	4	BALCONY	2166	201.2	16
211	21	4	BALCONY	2237	207.8	17
212	21	4	BALCONY	2166	201.2	16
221	22	4	BALCONY	2237	207.8	17
222	22	4	BALCONY	2166	201.2	16
231	23	4	BALCONY	2249	208.9	19
232	23	4	BALCONY	2185	203	18
241	24	4	BALCONY	2249	208.9	19
242	24	4	BALCONY	2185	203	18
251	25	4	BALCONY	2249	208.9	19
252	25	4	BALCONY	2185	203	18
261	26	4	BALCONY	2249	208.9	19
262	26	4	BALCONY	2185	203	18
271	27	4	BALCONY	2249	208.9	19
272	27	4	BALCONY	2185	203	18
281	28	4	BALCONY	2251	209.1	20
282	28	4	BALCONY	2283	212.1	19
291	29	4	BALCONY	2348	218.1	22
292	29	4	—	2379	221	21
301	30	4	BALCONY	2348	218.1	22
302	30	4	—	2379	221	21
311	31	5	BALCONY	4787	444.7	24
321	32	4	—	4612	428.5	26
331	33	4	—	4366	405.6	28
341	34	4	TERRACE	3960	367.9	30

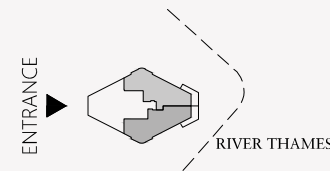
**TOWER WEST**  
GROUND FLOOR



Ground Floor	Apartment G2	
<b>2 Bedroom Apartment</b>		
Living/Kitchen	23'5" x 15'6"	(7.1m x 4.7m)
Master Bedroom	17'4" x 15'11"	(5.2m x 4.8m)
Bedroom 2	13'11" x 11'1"	(4.2m x 3.3m)
<b>APARTMENT AREA</b>	<b>1032 sq ft</b>	<b>(95.9 sq m)</b>
Balcony	129 sq ft	(12 sq m)
<b>TOTAL AREA</b>	<b>1161 sq ft</b>	<b>(107.9 sq m)</b>

Ground Floor	Apartment G1	
<b>2 Bedroom Apartment</b>		
Living/Kitchen	23'5" x 15'6"	(7.1m x 4.7m)
Master Bedroom	19'8" x 15'9"	(5.9m x 4.7m)
Bedroom 2	11'3" x 8'3"	(3.4m x 2.5m)
<b>APARTMENT AREA</b>	<b>1002 sq ft</b>	<b>(93.1 sq m)</b>
Balcony	129 sq ft	(12 sq m)
<b>TOTAL AREA</b>	<b>1131 sq ft</b>	<b>(105.1 sq m)</b>

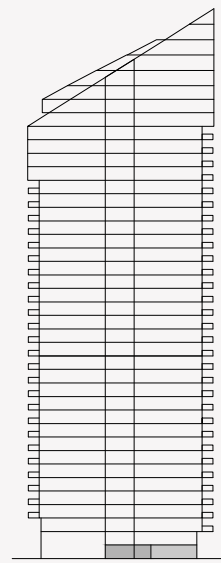
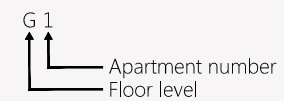
KEY PLAN AND ELEVATION



LEGEND

- W - Wardrobe
- WH - Water Heater
- WD - Washer Dryer
- E/D - Electrical / Data

APARTMENT NUMBERING SYSTEM



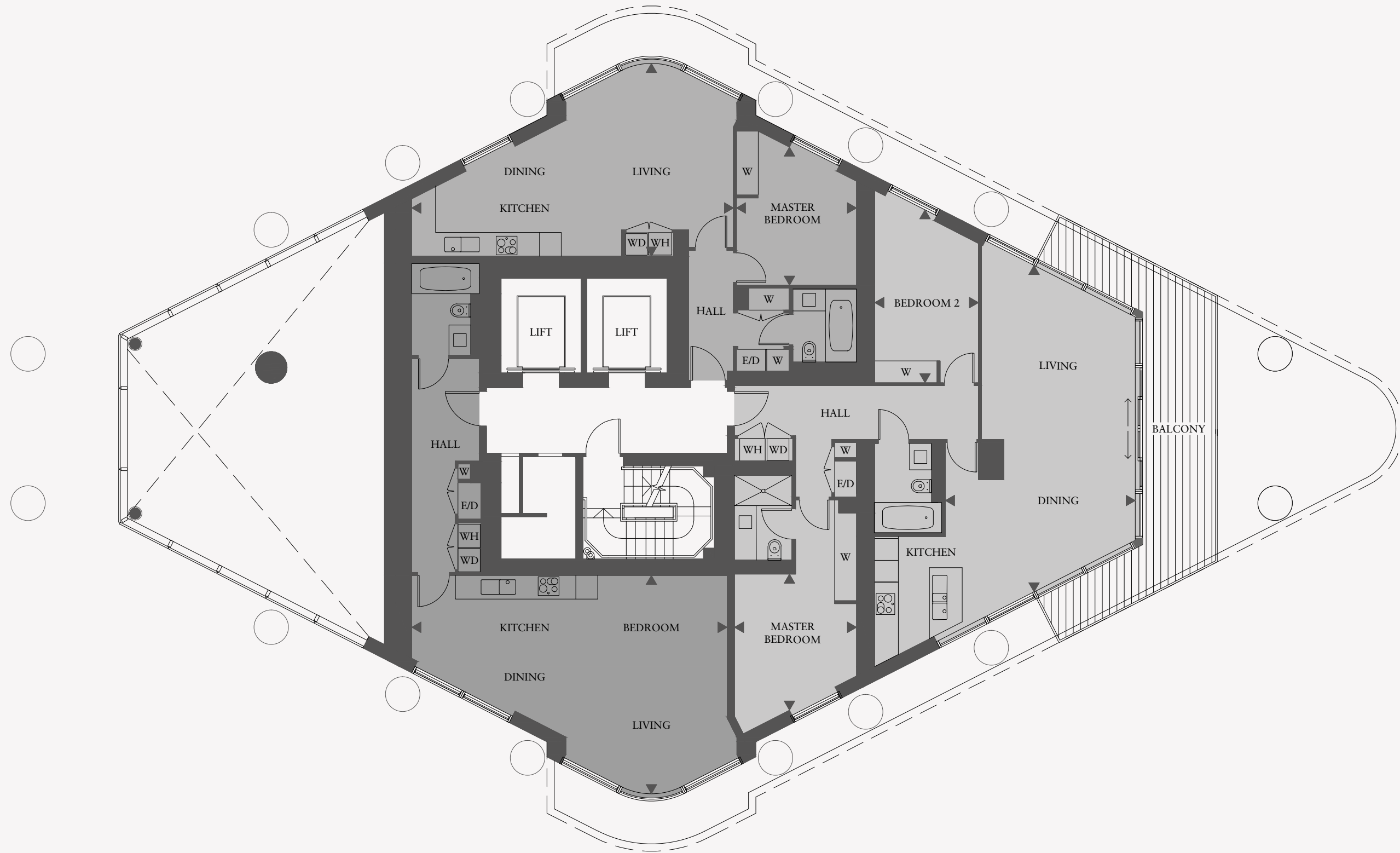
Floor plans shown are for approximate measurements only. Exact layout and sizes may vary.



# TOWER WEST

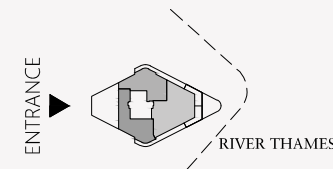
## LEVEL 1

Level 1	Apartment 12	
<b>Studio Apartment</b>		
Living/Kitchen	28'4" x 19'8"	(8.6m x 5.9m)
<b>APARTMENT AREA</b>	<b>610 sq ft</b>	<b>(56.7 sq m)</b>
<b>TOTAL AREA</b>	<b>610 sq ft</b>	<b>(56.7 sq m)</b>



Level 1	Apartment 13	
<b>1 Bedroom Apartment</b>		
Living/Kitchen	28'11" x 17'4"	(8.8m x 5.2m)
Master Bedroom	12'5" x 10'10"	(3.7m x 3.2m)
<b>APARTMENT AREA</b>	<b>647 sq ft</b>	<b>(60.1 sq m)</b>
<b>TOTAL AREA</b>	<b>647 sq ft</b>	<b>(60.1 sq m)</b>

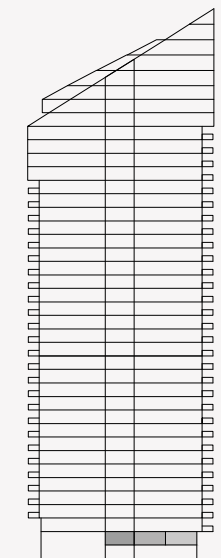
### KEY PLAN AND ELEVATION



### LEGEND

- W - Wardrobe
- WH - Water Heater
- WD - Washer Dryer
- E/D - Electrical / Data

### APARTMENT NUMBERING SYSTEM



Level 1	Apartment 11	
<b>2 Bedroom Apartment</b>		
Living/Kitchen	29'4" x 17'1"	(8.9m x 5.2m)
Master Bedroom	12'3" x 11'	(3.7m x 3.3m)
Bedroom 2	14'7" x 9'4"	(4.4m x 2.8m)
<b>APARTMENT AREA</b>	<b>1108 sq ft</b>	<b>(102.9 sq m)</b>
Balcony	258 sq ft	(24 sq m)
<b>TOTAL AREA</b>	<b>1366 sq ft</b>	<b>(126.9 sq m)</b>

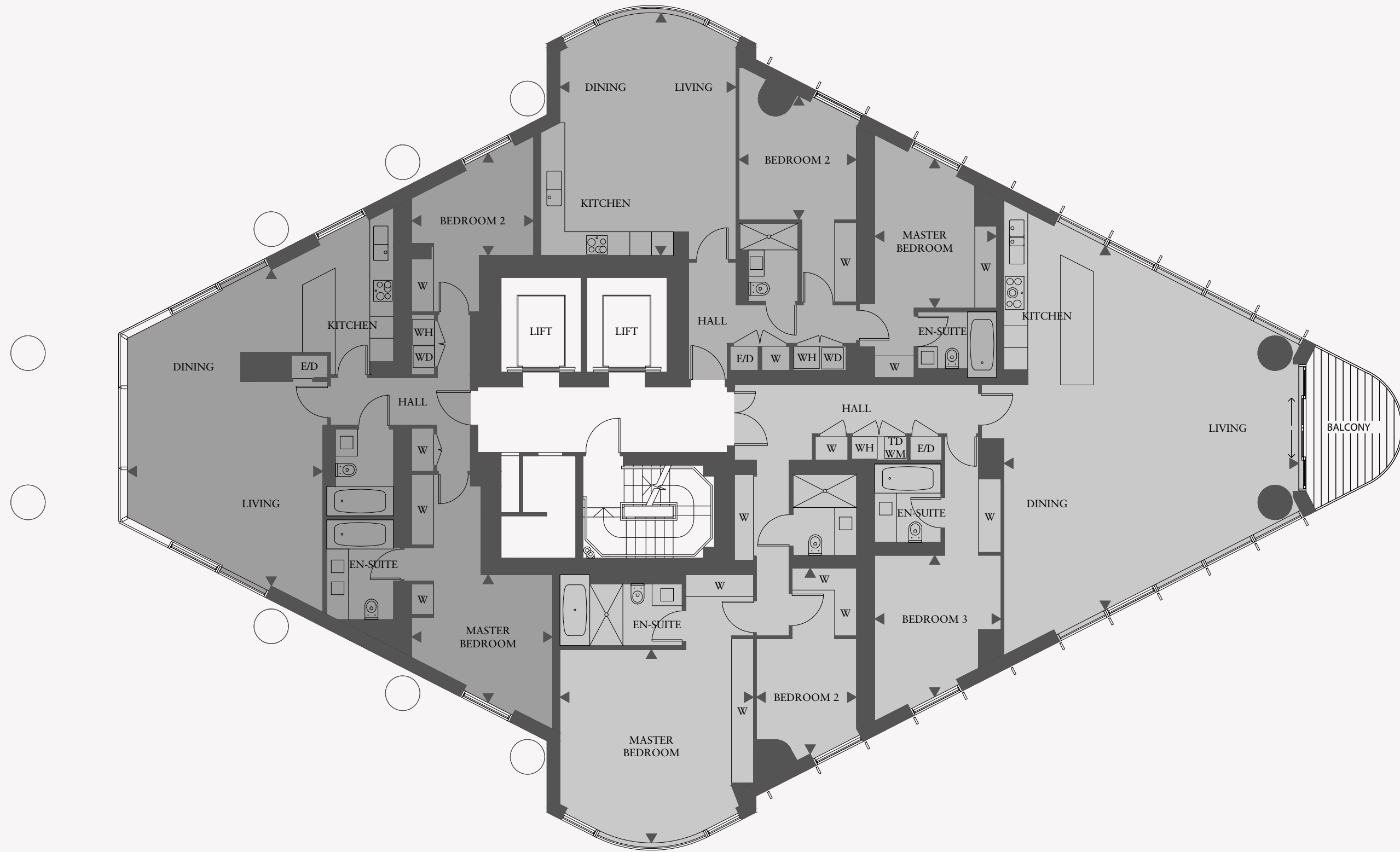
Floor plans shown are for approximate measurements only. Exact layout and sizes may vary.



# TOWER WEST

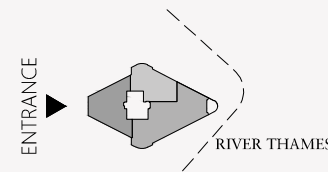
## LEVEL 2

Level 2	Apartment 22	
<b>2 Bedroom Apartment</b>		
Living/Kitchen	28'5" x 17'7"	(8.6m x 5.3m)
Master Bedroom	12'8" x 11'6"	(3.8m x 3.5m)
Bedroom 2	11' x 9'3"	(3.3m x 2.8m)
<b>APARTMENT AREA</b>	<b>1150 sq ft</b>	<b>(106.8 sq m)</b>
<b>TOTAL AREA</b>	<b>1150 sq ft</b>	<b>(106.8 sq m)</b>



Level 2	Apartment 23	
<b>2 Bedroom Apartment</b>		
Living/Kitchen	21'10" x 15'10"	(6.6m x 4.8m)
Master Bedroom	13'5" x 11'	(4.0m x 3.3m)
Bedroom 2	11'2" x 10'7"	(3.4m x 3.2m)
<b>APARTMENT AREA</b>	<b>927 sq ft</b>	<b>(86.1 sq m)</b>
<b>TOTAL AREA</b>	<b>927 sq ft</b>	<b>(86.1 sq m)</b>

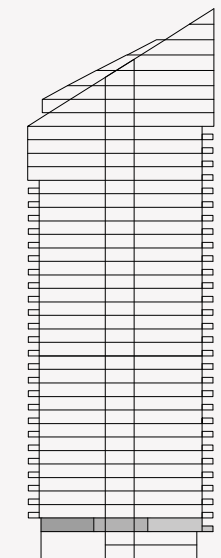
### KEY PLAN AND ELEVATION



### LEGEND

- W - Wardrobe
- WH - Water Heater
- WD - Washer Dryer
- TD - Tumble Dryer
- WM - Washing Machine
- E/D - Electrical / Data

### APARTMENT NUMBERING SYSTEM



Level 2	Apartment 21	
<b>3 Bedroom Apartment</b>		
Living/Kitchen	32'9" x 26'6"	(9.9m x 8.0m)
Master Bedroom	17'5" x 17'5"	(5.3m x 5.3m)
Bedroom 2	16'9" x 9'	(5.0m x 2.7m)
Bedroom 3	12'9" x 11'4"	(3.8m x 3.4m)
<b>APARTMENT AREA</b>	<b>1865 sq ft</b>	<b>(173.3 sq m)</b>
Balcony	86 sq ft	(8 sq m)
<b>TOTAL AREA</b>	<b>1951 sq ft</b>	<b>(181.3 sq m)</b>

Floor plans shown are for approximate measurements only. Exact layout and sizes may vary.

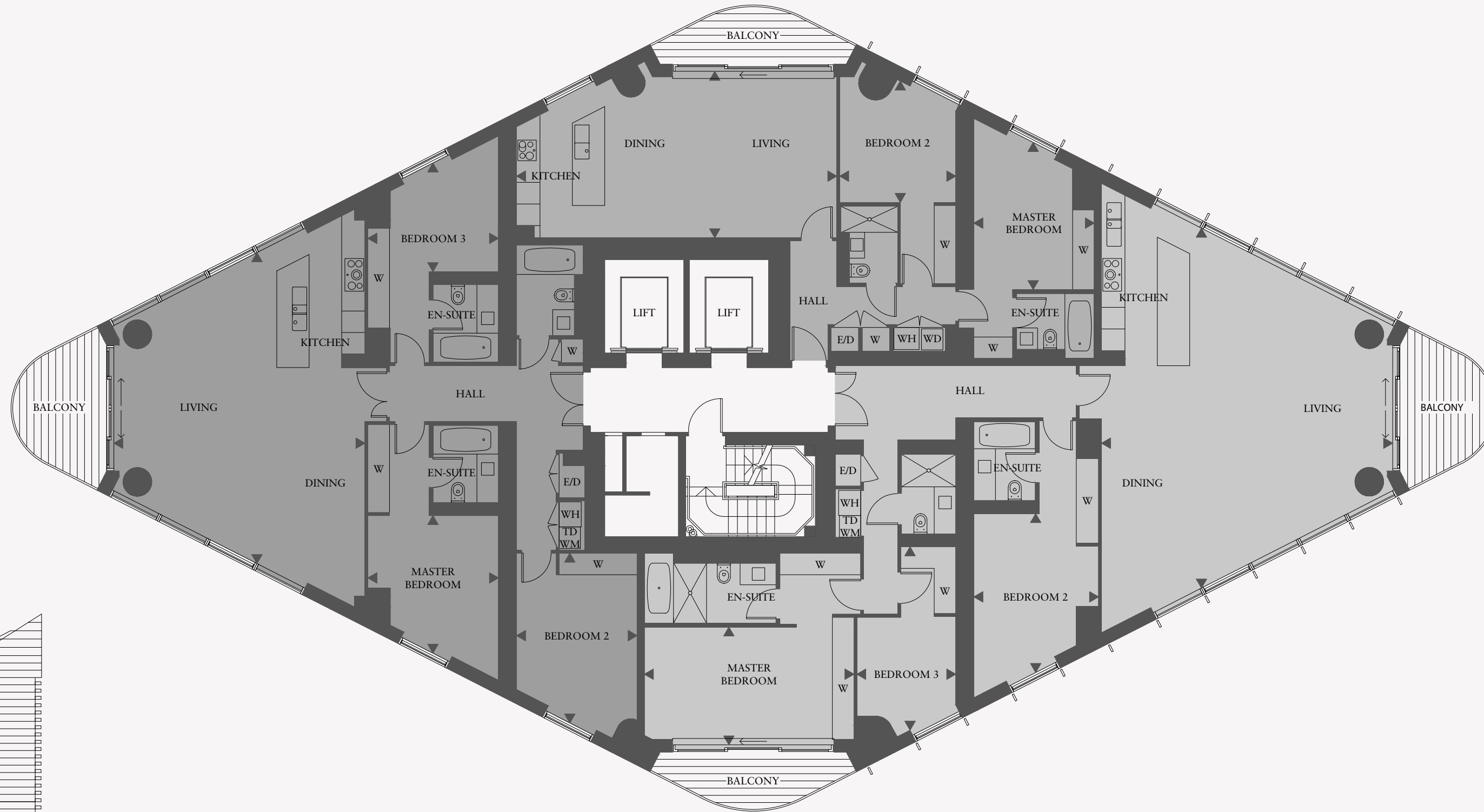


# TOWER WEST

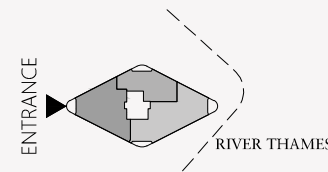
## LEVEL 3

Level 3	Apartment 32	
<b>3 Bedroom Apartment</b>		
Living/Kitchen	28'4" x 22'11"	(8.6m x 6.9m)
Master Bedroom	12'7" x 11'11"	(3.8m x 3.6m)
Bedroom 2	15'6" x 11'	(4.7m x 3.3m)
Bedroom 3	11'11" x 9'11"	(3.6m x 3.0m)
<b>APARTMENT AREA</b>	<b>1551 sq ft</b>	<b>(144.1 sq m)</b>
Balcony	86 sq ft	(8 sq m)
<b>TOTAL AREA</b>	<b>1637 sq ft</b>	<b>(152.1 sq m)</b>

Level 3	Apartment 33	
<b>2 Bedroom Apartment</b>		
Living/Kitchen	29'2" x 15'2"	(8.8m x 4.6m)
Master Bedroom	13'5" x 11'	(4.0m x 3.3m)
Bedroom 2	11'2" x 10'7"	(3.4m x 3.2m)
<b>APARTMENT AREA</b>	<b>996 sq ft</b>	<b>(92.5 sq m)</b>
Balcony	75 sq ft	(7 sq m)
<b>TOTAL AREA</b>	<b>1071 sq ft</b>	<b>(99.5 sq m)</b>



### KEY PLAN AND ELEVATION



### LEGEND

- W - Wardrobe
- WH - Water Heater
- WD - Washer Dryer
- TD - Tumble Dryer
- WM - Washing Machine
- E/D - Electrical / Data

### APARTMENT NUMBERING SYSTEM



Level 3	Apartment 31	
<b>3 Bedroom Apartment</b>		
Living/Kitchen	32'9" x 26'6"	(9.9m x 8.0m)
Master Bedroom	19'1" x 10'9"	(5.8m x 3.2m)
Bedroom 2	14'5" x 11'4"	(4.4m x 3.4m)
Bedroom 3	16'9" x 9'	(5.0m x 2.7m)
<b>APARTMENT AREA</b>	<b>1801 sq ft</b>	<b>(167.3 sq m)</b>
Balcony	161 sq ft	(15 sq m)
<b>TOTAL AREA</b>	<b>1962 sq ft</b>	<b>(182.3 sq m)</b>

Floor plans shown are for approximate measurements only. Exact layout and sizes may vary.



# TOWER WEST

## LEVELS 4-7

Level 4	Apartment 42
Level 5	Apartment 52
Level 6	Apartment 62
Level 7	Apartment 72

### 3 Bedroom Apartment

Living/Kitchen	28'4" x 22'11"	(8.6m x 6.9m)
Master Bedroom	12'7" x 11'11"	(3.8m x 3.6m)
Bedroom 2	15'6" x 11'	(4.7m x 3.3m)
Bedroom 3	11'11" x 9'11"	(3.6m x 3.0m)

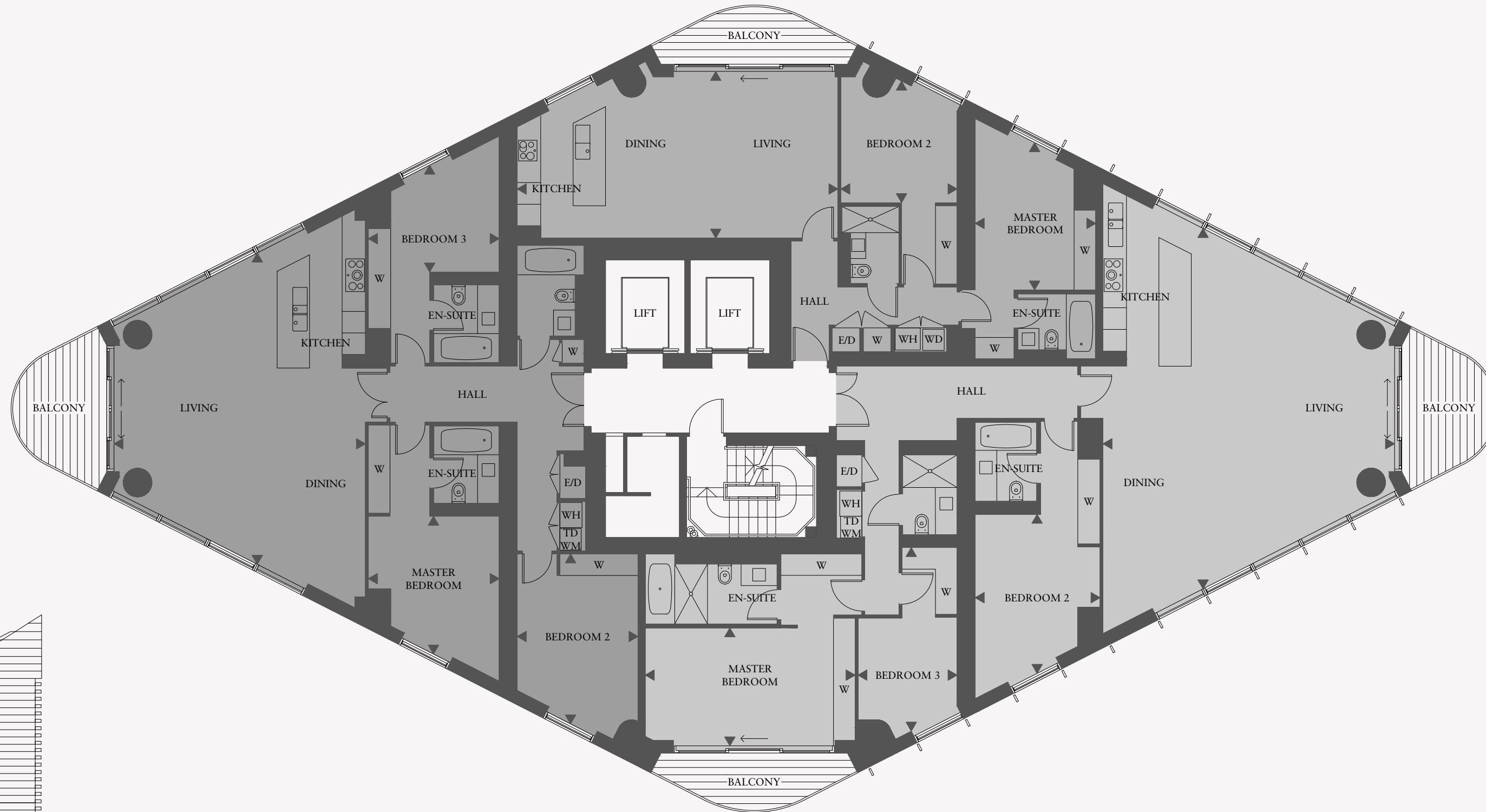
<b>APARTMENT AREA</b>	<b>1551 sq ft</b>	<b>(144.1 sq m)</b>
Balcony	86 sq ft	(8 sq m)
<b>TOTAL AREA</b>	<b>1637 sq ft</b>	<b>(152.1 sq m)</b>

Level 4	Apartment 43
Level 5	Apartment 53
Level 6	Apartment 63
Level 7	Apartment 73

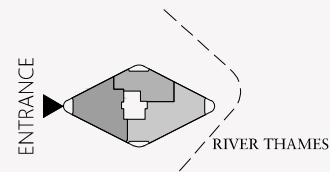
### 2 Bedroom Apartment

Living/Kitchen	29'2" x 15'2"	(8.8m x 4.6m)
Master Bedroom	13'5" x 11'	(4.0m x 3.3m)
Bedroom 2	11'2" x 10'7"	(3.4m x 3.2m)

<b>APARTMENT AREA</b>	<b>996 sq ft</b>	<b>(92.5 sq m)</b>
Balcony	75 sq ft	(7 sq m)
<b>TOTAL AREA</b>	<b>1071 sq ft</b>	<b>(99.5 sq m)</b>



### KEY PLAN AND ELEVATION



### LEGEND

- W - Wardrobe
- WH - Water Heater
- WD - Washer Dryer
- TD - Tumble Dryer
- WM - Washing Machine
- E/D - Electrical / Data

### APARTMENT NUMBERING SYSTEM



Level 4	Apartment 41
Level 5	Apartment 51
Level 6	Apartment 61
Level 7	Apartment 71

### 3 Bedroom Apartment

Living/Kitchen	32'9" x 26'6"	(9.9m x 8.0m)
Master Bedroom	19'1" x 10'9"	(5.8m x 3.2m)
Bedroom 2	14'5" x 11'4"	(4.4m x 3.4m)
Bedroom 3	16'9" x 9'	(5.0m x 2.7m)

<b>APARTMENT AREA</b>	<b>1801 sq ft</b>	<b>(167.3 sq m)</b>
Balcony	161 sq ft	(15 sq m)
<b>TOTAL AREA</b>	<b>1962 sq ft</b>	<b>(182.3 sq m)</b>

Floor plans shown are for approximate measurements only. Exact layout and sizes may vary.



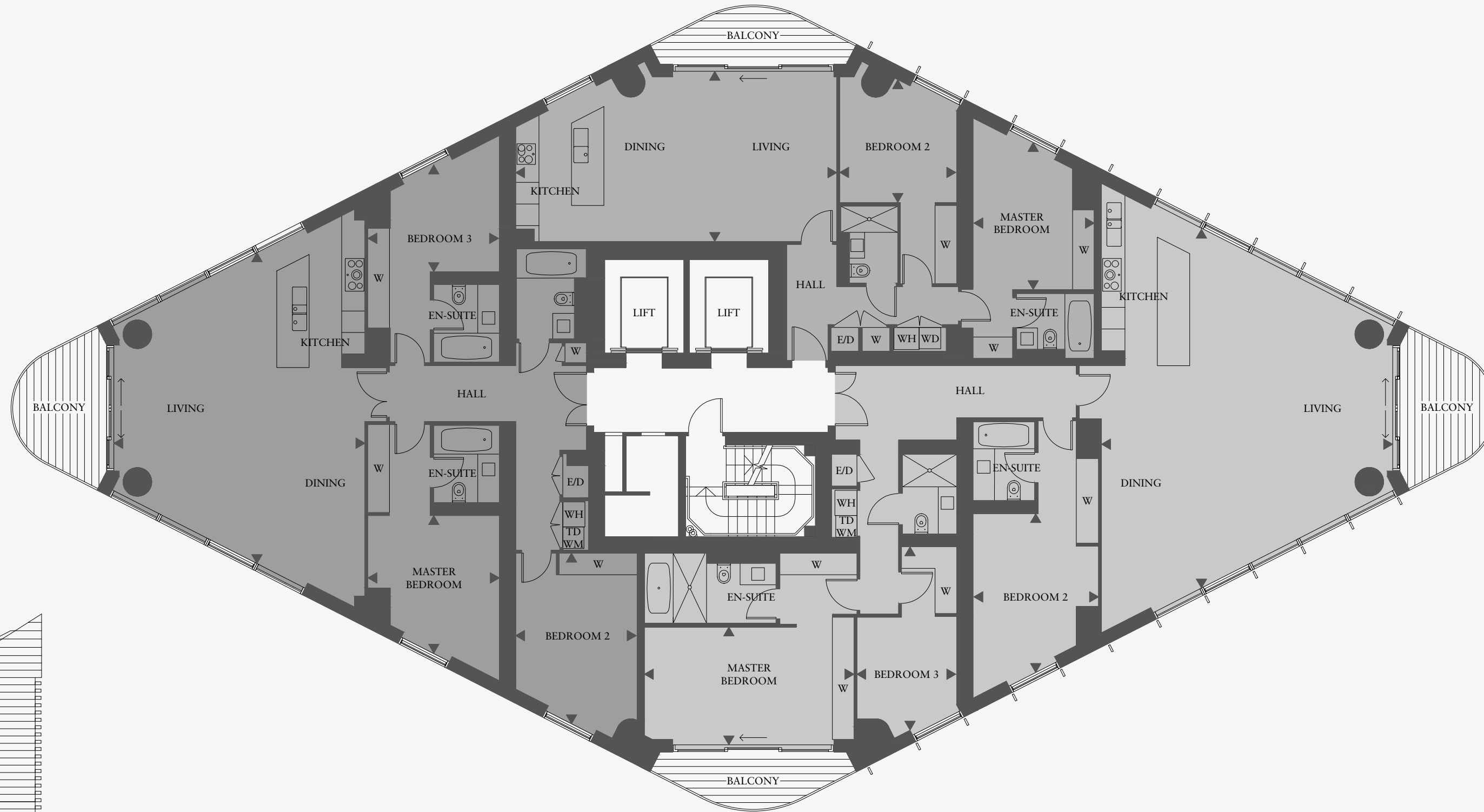


# TOWER WEST

LEVELS 8-9

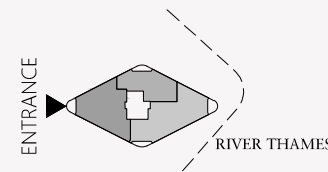
Level 8	Apartment 82
Level 9	Apartment 92
<b>3 Bedroom Apartment</b>	
Living/Kitchen	28'4" x 22'11" (8.6m x 6.9m)
Master Bedroom	12'7" x 12' (3.8m x 3.6m)
Bedroom 2	15'6" x 11' (4.7m x 3.3m)
Bedroom 3	12' x 9'11" (3.6m x 3.0m)
<b>APARTMENT AREA</b>	<b>1559 sq ft (144.8 sq m)</b>
Balcony	86 sq ft (8 sq m)
<b>TOTAL AREA</b>	<b>1645 sq ft (152.8 sq m)</b>

Level 8	Apartment 83
Level 9	Apartment 93
<b>2 Bedroom Apartment</b>	
Living/Kitchen	29'3" x 15'6" (8.9m x 4.7m)
Master Bedroom	13'5" x 11'1" (4.0m x 3.3m)
Bedroom 2	11'2" x 10'8" (3.4m x 3.2m)
<b>APARTMENT AREA</b>	<b>1006 sq ft (93.5 sq m)</b>
Balcony	75 sq ft (7 sq m)
<b>TOTAL AREA</b>	<b>1081 sq ft (100.5 sq m)</b>



Level 8	Apartment 81
Level 9	Apartment 91
<b>3 Bedroom Apartment</b>	
Living/Kitchen	32'9" x 26'6" (9.9m x 8.0m)
Master Bedroom	19'1" x 10'9" (5.8m x 3.2m)
Bedroom 2	14'5" x 11'4" (4.4m x 3.4m)
Bedroom 3	16'9" x 9'1" (5.0m x 2.7m)
<b>APARTMENT AREA</b>	<b>1803 sq ft (167.5 sq m)</b>
Balcony	161 sq ft (15 sq m)
<b>TOTAL AREA</b>	<b>1964 sq ft (182.5 sq m)</b>

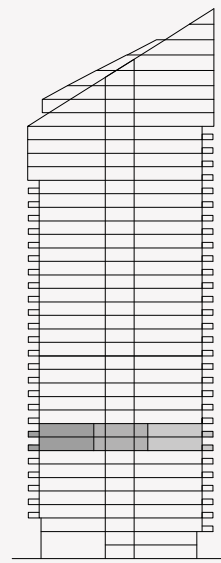
## KEY PLAN AND ELEVATION



## LEGEND

- W - Wardrobe
- WH - Water Heater
- WD - Washer Dryer
- TD - Tumble Dryer
- WM - Washing Machine
- E/D - Electrical / Data

## APARTMENT NUMBERING SYSTEM



Floor plans shown are for approximate measurements only. Exact layout and sizes may vary.



# TOWER WEST

LEVELS 10–22

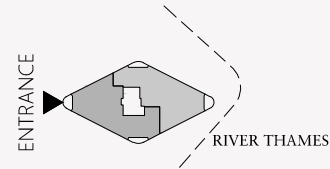
Level 10	Apartment 102
Level 11	Apartment 112
Level 12	Apartment 122
Level 13	Apartment 132
Level 14	Apartment 142
Level 15	Apartment 152
Level 16	Apartment 162
Level 17	Apartment 172
Level 18	Apartment 182
Level 19	Apartment 192
Level 20	Apartment 202
Level 21	Apartment 212
Level 22	Apartment 222

## 4 Bedroom Apartment

Living/Kitchen	40'2" x 17'6"	(12.2m x 5.3m)
Master Bedroom	22'11" x 14'1"	(6.9m x 4.3m)
Bedroom 2	11'8" x 11'7"	(3.5m x 3.5m)
Bedroom 3	11'8" x 11'5"	(3.5m x 3.4m)
Bedroom 4	12'8" x 8'10"	(3.8m x 2.6m)

<b>APARTMENT AREA</b>	<b>2166 sq ft</b>	<b>(201.2 sq m)</b>
Balcony	161 sq ft	(15 sq m)
<b>TOTAL AREA</b>	<b>2327 sq ft</b>	<b>(216.2 sq m)</b>

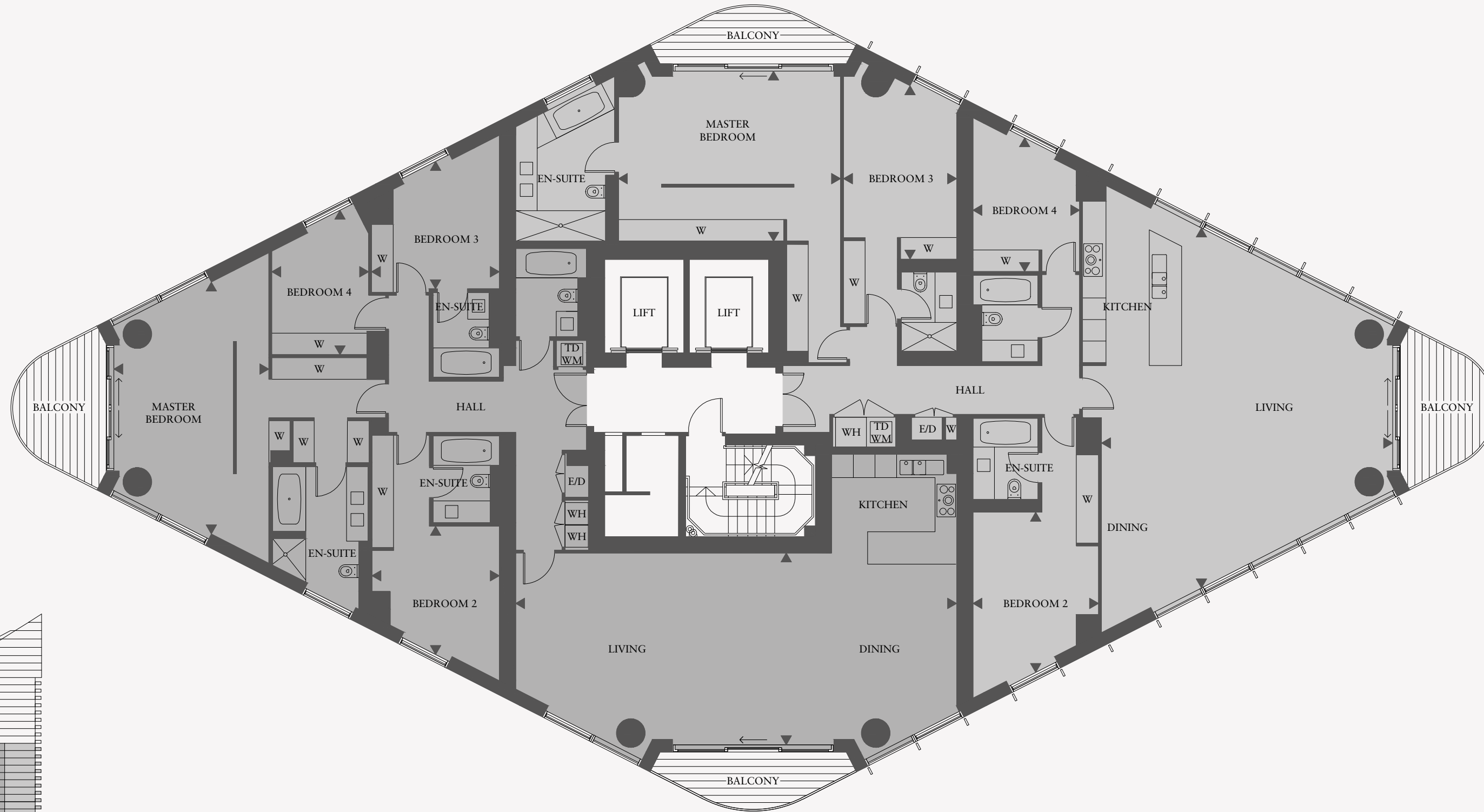
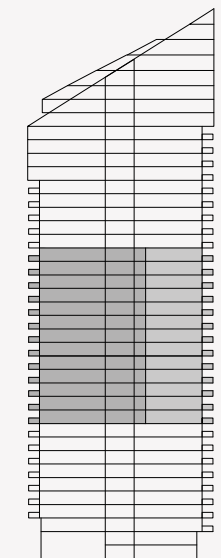
## KEY PLAN AND ELEVATION



## LEGEND

- W - Wardrobe
- WH - Water Heater
- TD - Tumble Dryer
- WM - Washing Machine
- E/D - Electrical / Data

## APARTMENT NUMBERING SYSTEM



Level 10	Apartment 101
Level 11	Apartment 111
Level 12	Apartment 121
Level 13	Apartment 131
Level 14	Apartment 141
Level 15	Apartment 151
Level 16	Apartment 161
Level 17	Apartment 171
Level 18	Apartment 181
Level 19	Apartment 191
Level 20	Apartment 201
Level 21	Apartment 211
Level 22	Apartment 221

## 4 Bedroom Apartment

Living/Kitchen	32'9" x 26'6"	(9.9m x 8.0m)
Master Bedroom	20'3" x 15'6"	(6.1m x 4.7m)
Bedroom 2	14'7" x 11'5"	(4.4m x 3.4m)
Bedroom 3	15'10" x 10'4"	(4.8m x 3.1m)
Bedroom 4	11'10" x 9'9"	(3.5m x 2.9m)

<b>APARTMENT AREA</b>	<b>2237 sq ft</b>	<b>(207.8 sq m)</b>
Balcony	161 sq ft	(15 sq m)
<b>TOTAL AREA</b>	<b>2398 sq ft</b>	<b>(222.8 sq m)</b>

Floor plans shown are for approximate measurements only. Exact layout and sizes may vary.



# TOWER WEST

LEVELS 23-27

Level 23	Apartment 232
Level 24	Apartment 242
Level 25	Apartment 252
Level 26	Apartment 262
Level 27	Apartment 272

## 4 Bedroom Apartment

Living/Kitchen	40'4" x 17'10"	(12.2m x 5.4m)
Master Bedroom	22'11" x 14'1"	(6.9m x 4.3m)
Bedroom 2	11'8" x 11'8"	(3.5m x 3.5m)
Bedroom 3	11'9" x 11'5"	(3.5m x 3.4m)
Bedroom 4	12'8" x 8'10"	(3.8m x 2.6m)

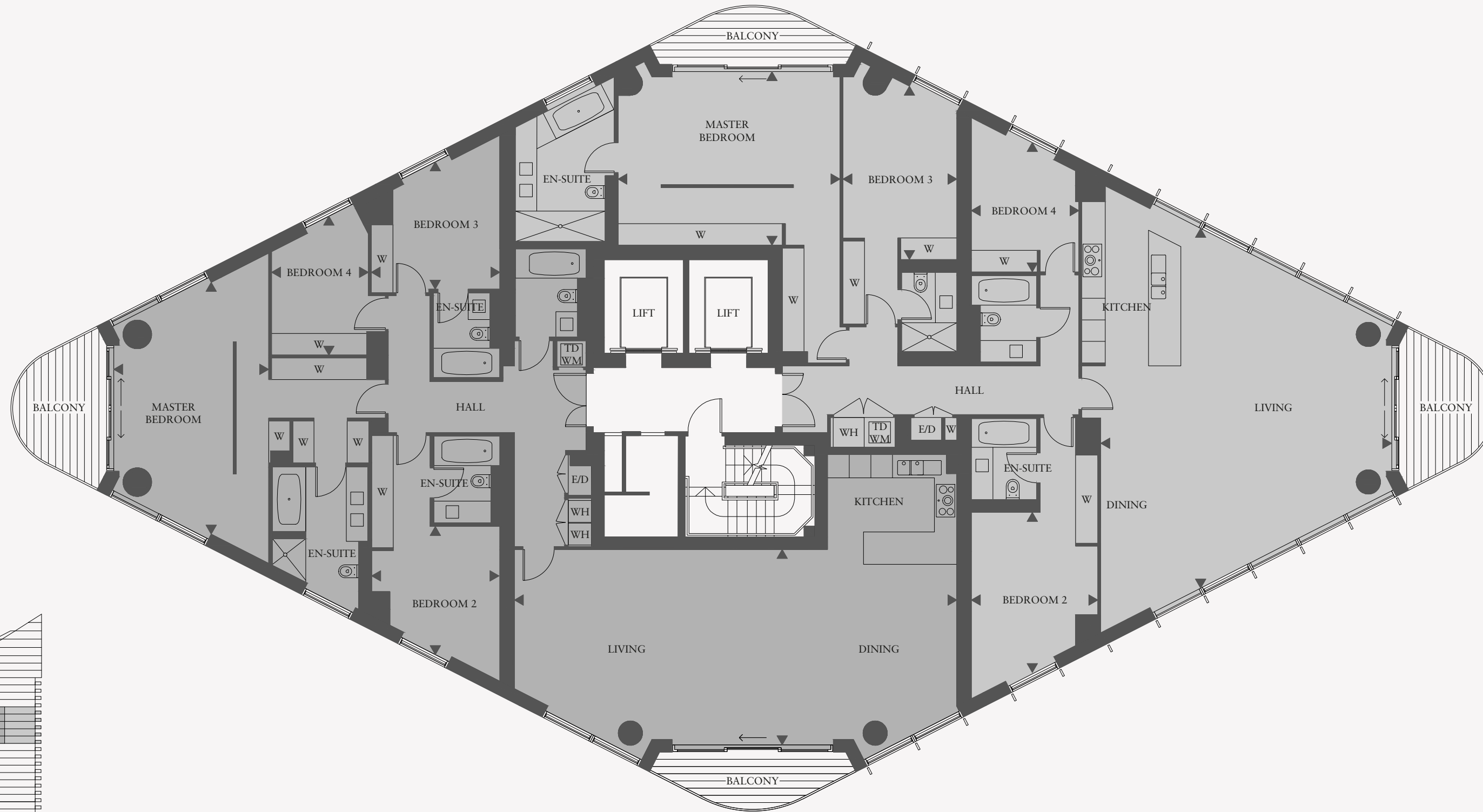
<b>APARTMENT AREA</b>	<b>2185 sq ft</b>	<b>(203 sq m)</b>
Balcony	161 sq ft	(15 sq m)
<b>TOTAL AREA</b>	<b>2346 sq ft</b>	<b>(218 sq m)</b>

Level 23	Apartment 231
Level 24	Apartment 241
Level 25	Apartment 251
Level 26	Apartment 261
Level 27	Apartment 271

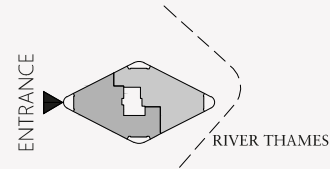
## 4 Bedroom Apartment

Living/Kitchen	32'9" x 26'6"	(9.9m x 8.0m)
Master Bedroom	20'3" x 15'10"	(6.1m x 4.8m)
Bedroom 2	14'7" x 11'6"	(4.4m x 3.5m)
Bedroom 3	15'10" x 10'5"	(4.8m x 3.1m)
Bedroom 4	11'10" x 9'10"	(3.5m x 2.9m)

<b>APARTMENT AREA</b>	<b>2249 sq ft</b>	<b>(208.9 sq m)</b>
Balcony	161 sq ft	(15 sq m)
<b>TOTAL AREA</b>	<b>2410 sq ft</b>	<b>(223.9 sq m)</b>



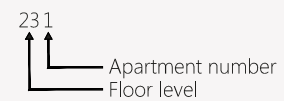
## KEY PLAN AND ELEVATION



## LEGEND

- W - Wardrobe
- WH - Water Heater
- TD - Tumble Dryer
- WM - Washing Machine
- E/D - Electrical / Data

## APARTMENT NUMBERING SYSTEM



Floor plans shown are for approximate measurements only. Exact layout and sizes may vary.

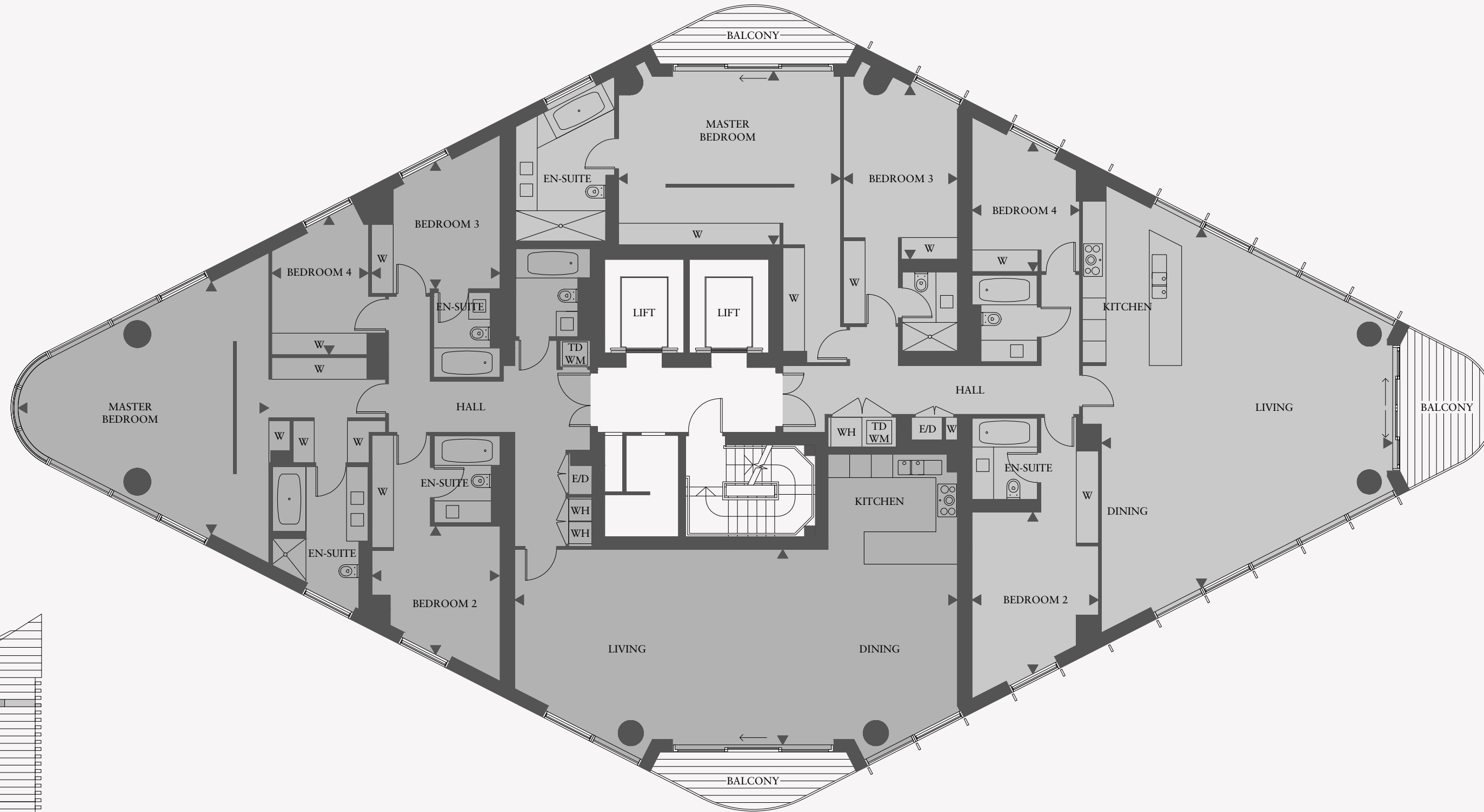


# TOWER WEST

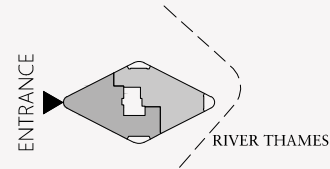
LEVEL 28

Level 28	Apartment 282	
<b>4 Bedroom Apartment</b>		
Living/Kitchen	40'4" x 17'10"	(12.2m x 5.4m)
Master Bedroom	22'11" x 22'10"	(6.9m x 6.9m)
Bedroom 2	11'8" x 11'8"	(3.5m x 3.5m)
Bedroom 3	11'9" x 11'5"	(3.5m x 3.4m)
Bedroom 4	12'8" x 8'10"	(3.8m x 2.6m)
<b>APARTMENT AREA</b>	<b>2283 sq ft</b>	<b>(212.1 sq m)</b>
Balcony	75 sq ft	(7 sq m)
<b>TOTAL AREA</b>	<b>2358 sq ft</b>	<b>(219.1 sq m)</b>

Level 28	Apartment 281	
<b>4 Bedroom Apartment</b>		
Living/Kitchen	32'9" x 26'6"	(9.9m x 8.0m)
Master Bedroom	20'3" x 15'10"	(6.1m x 4.8m)
Bedroom 2	14'7" x 11'6"	(4.4m x 3.5m)
Bedroom 3	15'10" x 10'5"	(4.8m x 3.1m)
Bedroom 4	11'10" x 9'10"	(3.5m x 2.9m)
<b>APARTMENT AREA</b>	<b>2251 sq ft</b>	<b>(209.1 sq m)</b>
Balcony	161 sq ft	(15 sq m)
<b>TOTAL AREA</b>	<b>2412 sq ft</b>	<b>(224.1 sq m)</b>



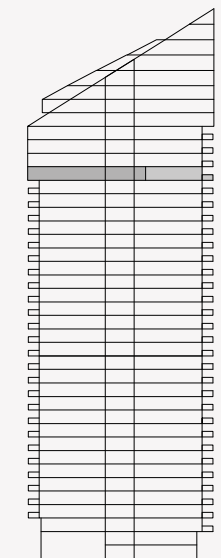
## KEY PLAN AND ELEVATION



## LEGEND

- W - Wardrobe
- WH - Water Heater
- TD - Tumble Dryer
- WM - Washing Machine
- E/D - Electrical / Data

## APARTMENT NUMBERING SYSTEM



Floor plans shown are for approximate measurements only. Exact layout and sizes may vary.

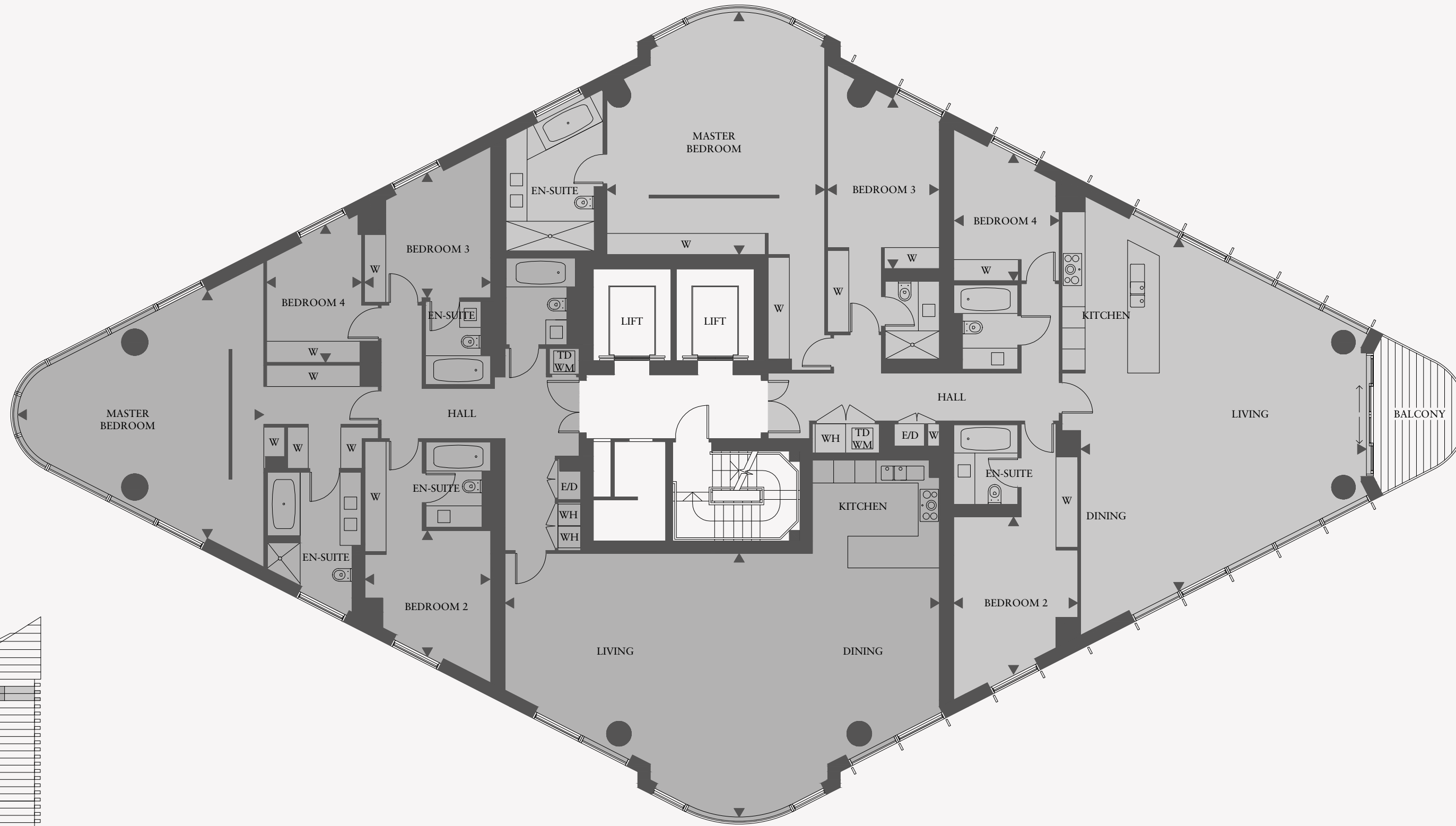


# TOWER WEST

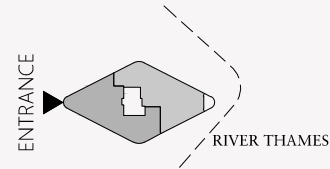
LEVELS 29-30

Level 29	Apartment 292
Level 30	Apartment 302
<b>4 Bedroom Apartment</b>	
Living/Kitchen	40'4" x 24'6" (12.2m x 7.4m)
Master Bedroom	22'11" x 22'10" (6.9m x 6.9m)
Bedroom 2	11'8" x 11'8" (3.5m x 3.5m)
Bedroom 3	11'9" x 11'5" (3.5m x 3.4m)
Bedroom 4	12'8" x 8'10" (3.8m x 2.6m)
<b>APARTMENT AREA</b>	<b>2379 sq ft (221 sq m)</b>
<b>TOTAL AREA</b>	<b>2379 sq ft (221 sq m)</b>

Level 29	Apartment 291
Level 30	Apartment 301
<b>4 Bedroom Apartment</b>	
Living/Kitchen	32'9" x 26'6" (9.9m x 8.0m)
Master Bedroom	22'6" x 20'3" (6.8m x 6.1m)
Bedroom 2	14'7" x 11'6" (4.4m x 3.5m)
Bedroom 3	15'10" x 10'5" (4.8m x 3.1m)
Bedroom 4	11'10" x 9'10" (3.5m x 2.9m)
<b>APARTMENT AREA</b>	<b>2348 sq ft (218.1 sq m)</b>
Balcony	86 sq ft (8 sq m)
<b>TOTAL AREA</b>	<b>2434 sq ft (226.1 sq m)</b>



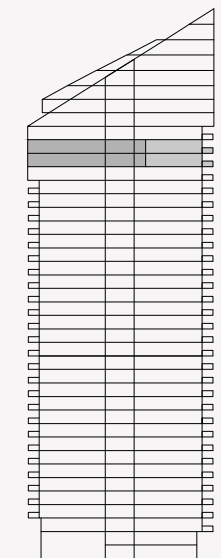
## KEY PLAN AND ELEVATION



## LEGEND

- W - Wardrobe
- WH - Water Heater
- TD - Tumble Dryer
- WM - Washing Machine
- E/D - Electrical / Data

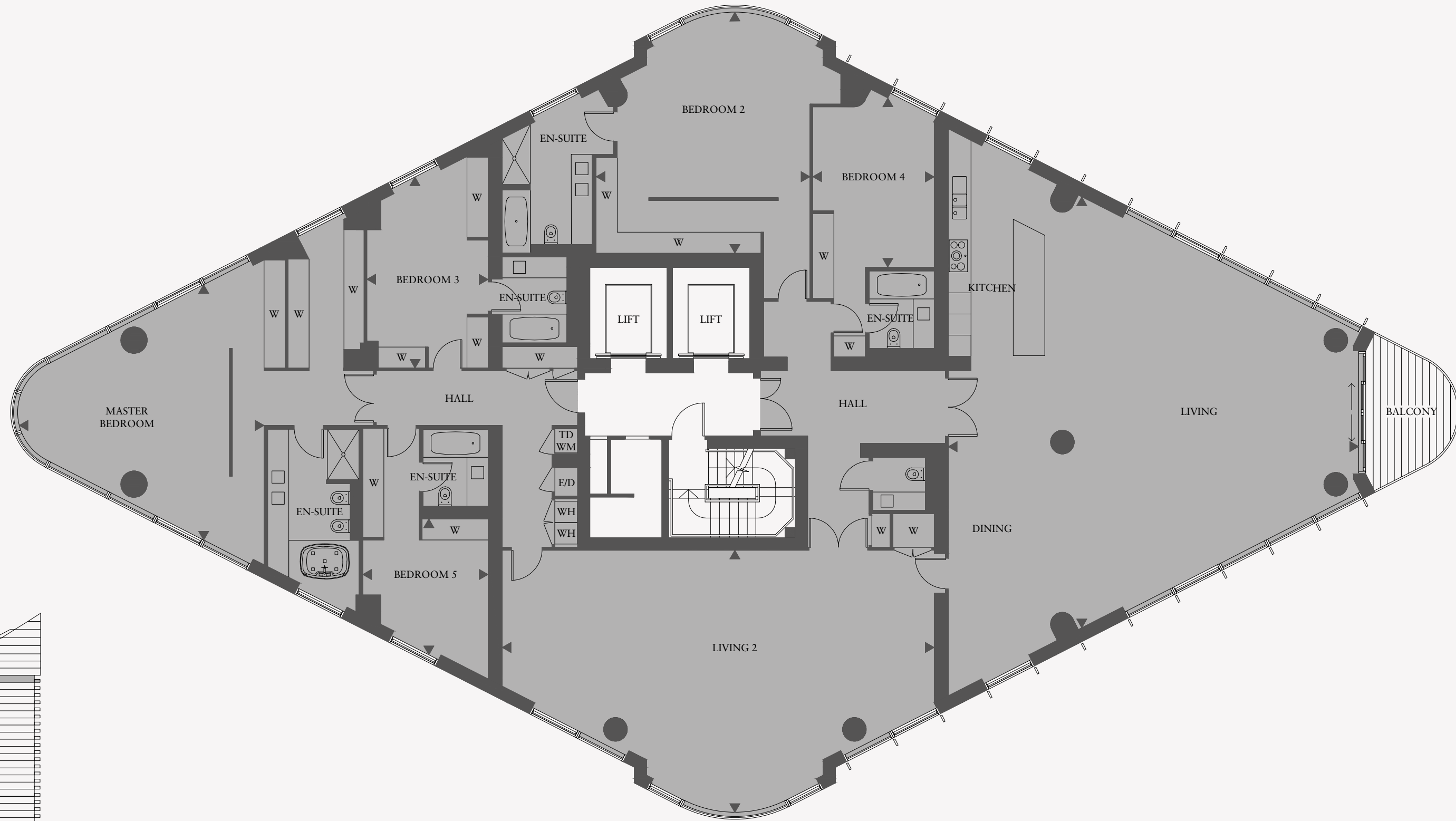
## APARTMENT NUMBERING SYSTEM



Floor plans shown are for approximate measurements only. Exact layout and sizes may vary.

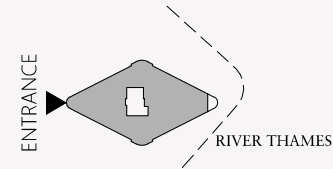


TOWER WEST  
LEVEL 31



Level 31	Apartment 311	
<b>5 Bedroom Apartment</b>		
Living/Kitchen	40'7" x 38'4"	(12.3m x 11.6m)
Living 2	40'4" x 24'6"	(12.2m x 7.4m)
Master Bedroom	23'10" x 22'10"	(7.2m x 6.9m)
Bedroom 2	22'6" x 20'	(6.8m x 6.0m)
Bedroom 3	17'10" x 11'7"	(5.4m x 3.5m)
Bedroom 4	15'10" x 11'4"	(4.8m x 3.4m)
Bedroom 5	12'6" x 11'8"	(3.8m x 3.5m)
<b>APARTMENT AREA</b>	<b>4787 sq ft</b>	<b>(444.7 sq m)</b>
Balcony	86 sq ft	(8 sq m)
<b>TOTAL AREA</b>	<b>4873 sq ft</b>	<b>(452.7 sq m)</b>

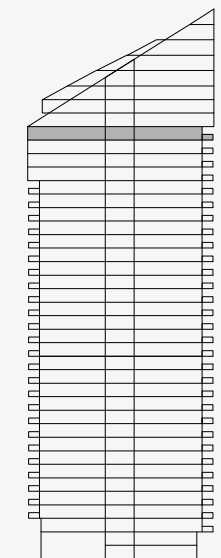
KEY PLAN AND ELEVATION



LEGEND

- W - Wardrobe
- WH - Water Heater
- TD - Tumble Dryer
- WM - Washing Machine
- E/D - Electrical / Data

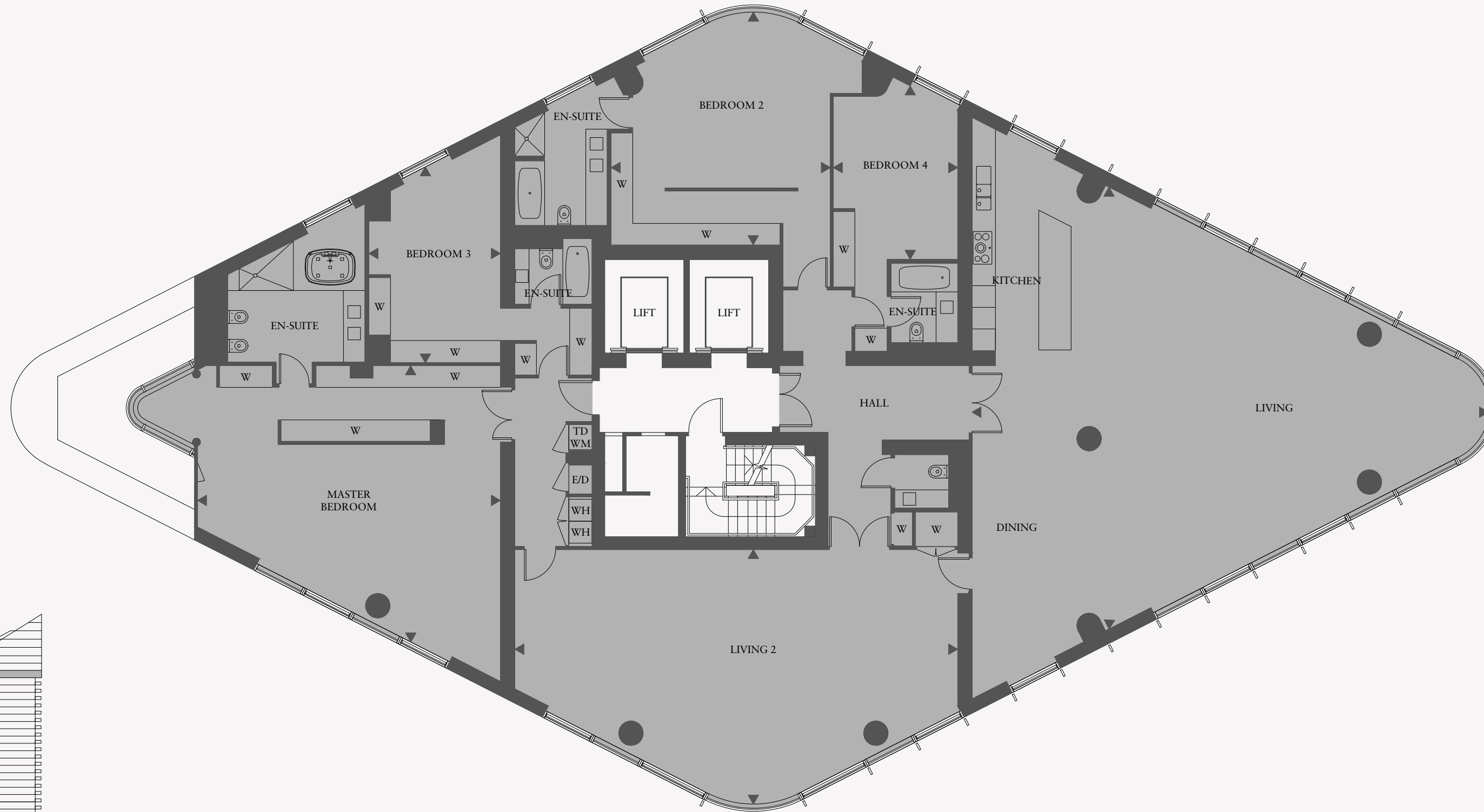
APARTMENT NUMBERING SYSTEM



Floor plans shown are for approximate measurements only. Exact layout and sizes may vary.

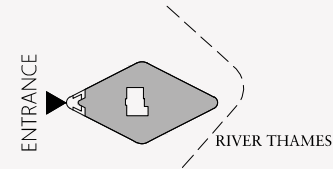


**TOWER WEST**  
LEVEL 32



Level 32	Apartment 321	
<b>4 Bedroom Apartment</b>		
Living/Kitchen	47' x 40'7"	(14.3m x 12.3m)
Living 2	40'4" x 23'2"	(12.2m x 7.0m)
Master Bedroom	27'7" x 25'4"	(8.4m x 7.7m)
Bedroom 2	21'3" x 20'	(6.4m x 6.0m)
Bedroom 3	17'10" x 12'	(5.4m x 3.6m)
Bedroom 4	15'10" x 11'4"	(4.8m x 3.4m)
<b>APARTMENT AREA</b>	<b>4612 sq ft</b>	<b>(428.5 sq m)</b>
<b>TOTAL AREA</b>	<b>4612 sq ft</b>	<b>(428.5 sq m)</b>

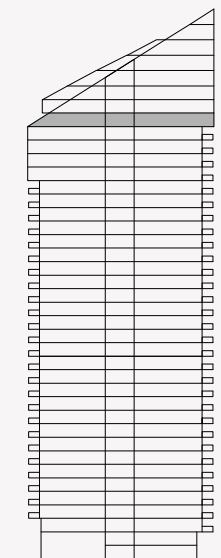
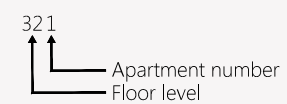
KEY PLAN AND ELEVATION



LEGEND

- W - Wardrobe
- WH - Water Heater
- TD - Tumble Dryer
- WM - Washing Machine
- E/D - Electrical / Data

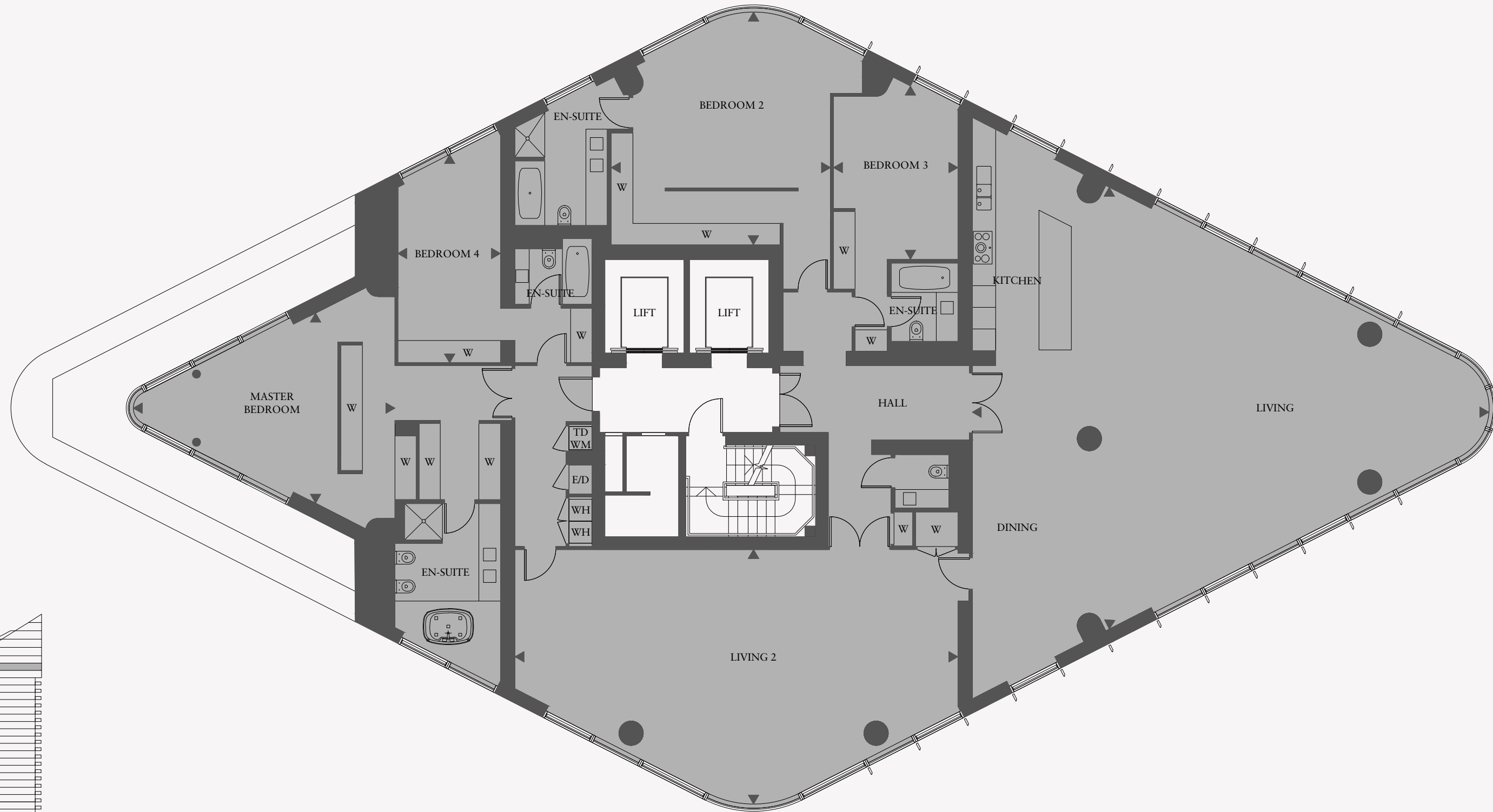
APARTMENT NUMBERING SYSTEM



Floor plans shown are for approximate measurements only. Exact layout and sizes may vary.

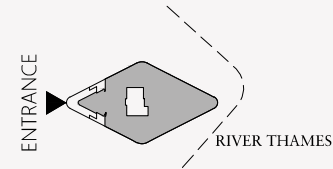


**TOWER WEST**  
LEVEL 33



Level 33	Apartment 331	
<b>4 Bedroom Apartment</b>		
Living/Kitchen	47' x 40'7"	(14.3m x 12.3m)
Living 2	40'4" x 23'2"	(12.2m x 7.0m)
Master Bedroom	23'4" x 17'4"	(7.1m x 5.2m)
Bedroom 2	21'3" x 20'	(6.4m x 6.0m)
Bedroom 3	15'10" x 11'4"	(4.8m x 3.4m)
Bedroom 4	19' x 9'4"	(5.7m x 2.8m)
<b>APARTMENT AREA</b>	<b>4366 sq ft</b>	<b>(405.6 sq m)</b>
<b>TOTAL AREA</b>	<b>4366 sq ft</b>	<b>(405.6 sq m)</b>

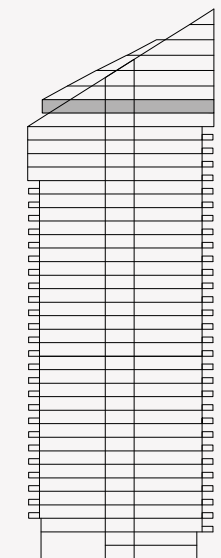
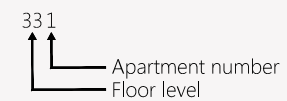
KEY PLAN AND ELEVATION



LEGEND

- W - Wardrobe
- WH - Water Heater
- TD - Tumble Dryer
- WM - Washing Machine
- E/D - Electrical / Data

APARTMENT NUMBERING SYSTEM

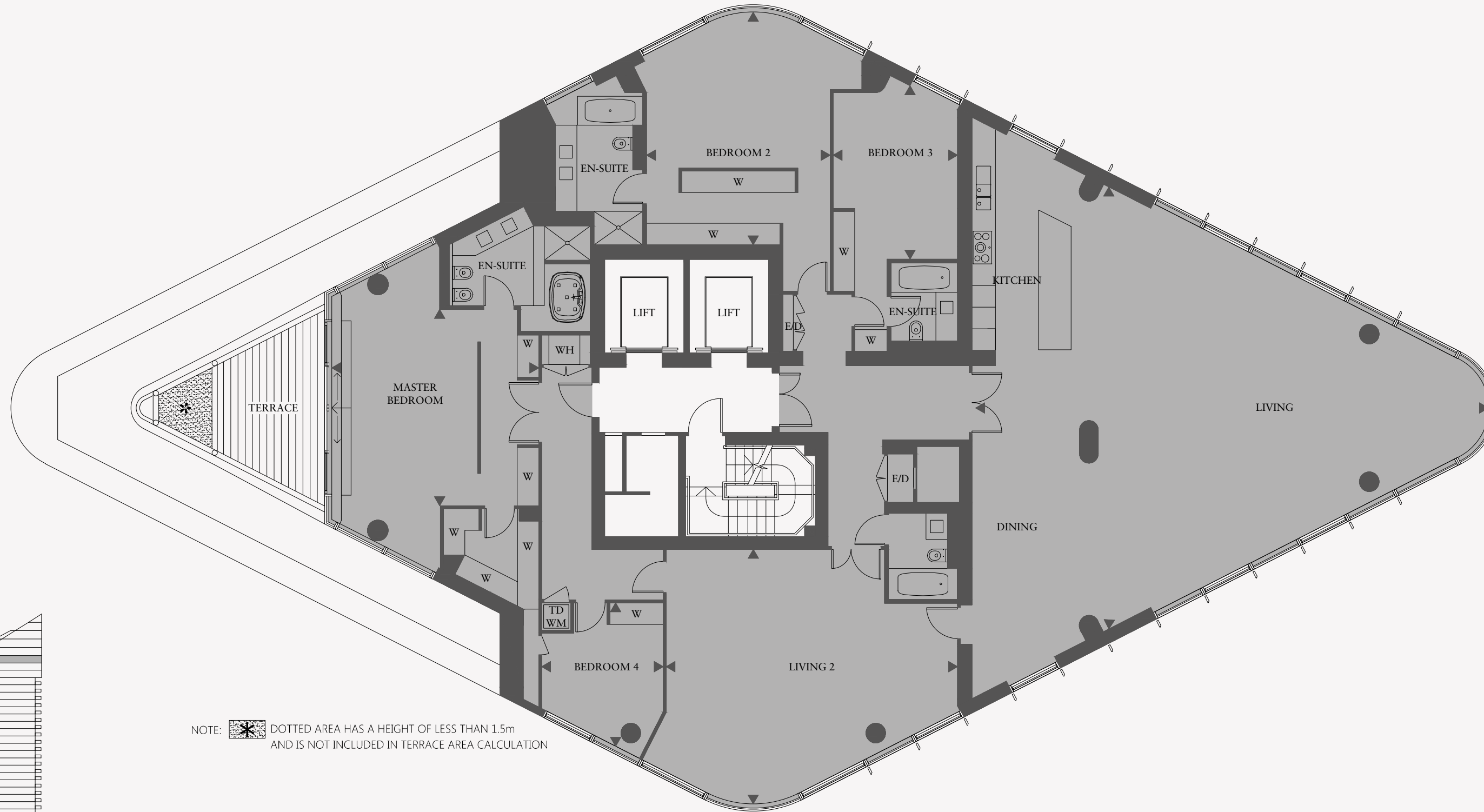


Floor plans shown are for approximate measurements only. Exact layout and sizes may vary.



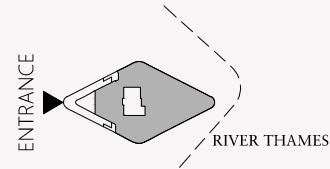


**TOWER WEST**  
LEVEL 34



Level 34	Apartment 341	
<b>4 Bedroom Apartment</b>		
Living/Kitchen	47' x 40'7"	(14.3m x 12.3m)
Living 2	26'7" x 23'2"	(8.0m x 7.0m)
Master Bedroom	18'10" x 17'11"	(5.7m x 5.4m)
Bedroom 2	21'3" x 16'9"	(6.4m x 5.1m)
Bedroom 3	15'10" x 11'4"	(4.8m x 3.4m)
Bedroom 4	13'2" x 11'1"	(4.0m x 3.3m)
<b>APARTMENT AREA</b>	<b>3960 sq ft</b>	<b>(367.9 sq m)</b>
Terraces	116 sq ft	(11 sq m)
<b>TOTAL AREA</b>	<b>4109 sq ft</b>	<b>(381.9 sq m)</b>

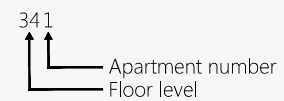
KEY PLAN AND ELEVATION



LEGEND

- W - Wardrobe
- WH - Water Heater
- TD - Tumble Dryer
- WM - Washing Machine
- E/D - Electrical / Data

APARTMENT NUMBERING SYSTEM



NOTE:  DOTTED AREA HAS A HEIGHT OF LESS THAN 1.5m AND IS NOT INCLUDED IN TERRACE AREA CALCULATION





# TOWER WEST SPECIFICATION

## INSPIRED DESIGN

### Main Structure

The framework of the building is generally of reinforced concrete construction. The external façade of the building is clad in a unitised glazed curtain wall with integrated ventilation louvres, feature vertical and horizontal aluminium fins.

The roofs of the building are generally finished with zinc metal. All private terraces will be finished in timber decking.

Aluminium powder coated double glazed windows and doors to balconies and terraces are provided where applicable.

### Walls

The walls are white painted skimmed plasterboard, with painted MDF skirting. Polished natural stone wall tiles are provided to all bathrooms. Stone skirting is provided in the entrance hall to match the flooring.

### Ceilings

All ceilings are white painted skimmed plasterboard.

### Flooring

All apartments are fitted with engineered hardwood flooring in all living spaces, including kitchens. Additionally, bedrooms are fitted with a high quality wool mix carpet. Entrance halls, bathrooms, shower rooms and WCs are fitted with natural stone floor tiles where applicable.

### Wardrobes

Bespoke built-in wardrobes are fitted to all bedrooms.

Wardrobes in master bedrooms have veneered drawers to match the internal doors.

### Balconies

Where provided, the balconies are finished with treated timber decking with glass balustrade and stainless steel handrail.

### Lifts

The lifts serve all floors within each building including the basement car park.

## EXQUISITE KITCHENS

### Kitchens

Kitchens are fitted with bespoke designed modular cabinets with high gloss lacquered doors to standard units. Full height units are of timber veneer with pelmet LED lighting under cabinets.

All cabinets and drawers have a discreet handleless design and are fitted with soft-close hinges and runners.

Worktops are of polished natural stone with matching natural stone splashback.

The under-mounted stainless steel sink is fitted with a deck mounted chrome mixer tap by Dornbracht (or similar). Studio, one and two bedroom apartments have a single sink, three bedroom apartments have a one and a half bowl sink and four and five bedroom apartments have a double sink.

Integrated appliances are generally by Gaggenau (or similar) unless otherwise stated and include:

- Fridge/freezer
- Dishwasher
- Plate warming drawer to four and five bedroom apartments
- Oven
  - Combined microwave and oven provided in studio and one bedroom apartments
  - Multi-function oven and separate combined microwave and oven in all other apartments
  - Four and five bedroom apartments have an additional steam oven and coffee machine
- Four-burner electric induction hob in studio, one and two bedroom apartments with an electric five-burner hob in three to five bedroom apartments
- Extractor fan with integrated lighting
- Wine cooler in all apartments (by Capel or similar in studio, one and two bedroom apartments and by Gaggenau or similar in three, four and five bedroom apartments)
- A combined washer dryer for studio, one and two bedroom apartments with separate washing machine and tumble dryer for all other apartments by Bosch (or similar)

Note: some variance occurs between apartments. Please refer to the sales team for individual apartment schedules for the kitchens.

## REFINED BATHROOMS

### General Bathrooms

All walls in the bathrooms are fully tiled with polished natural stone and complementary honed stone tiles to the floor. All brassware is polished stainless steel or chrome and generally by Dornbracht (or similar). Mirror demisters and under floor heating are provided as standard. All WCs are of white enamel with a dual push flush button. Each bathroom is fitted with backlit mirrored cabinets and low level veneered cabinets. Shaver sockets are fitted as standard to all bathrooms and shower rooms.

### Master Bathrooms

Natural marble tiles to all walls.

Bathrooms are fitted with enamelled steel bathtub with integrated bath filler and chrome hand shower attachment by Dornbracht (or similar); shower enclosure with ceiling mounted shower head, separate handheld attachment and body jets thermostatically controlled, generally by Dornbracht (or similar); towel rail with a heated section of natural stone wall for towel and bathroom warming.

### Bathrooms (with bath only)

Bathrooms are fitted with an enamelled steel bathtub with an integrated bath filler; ceiling mounted and handheld showers generally by Dornbracht (or similar) within the bath with a glass bath screen; towel rail with a heated section of natural stone for towel and bathroom warming.

### Shower Rooms (with shower only)

Shower rooms are fitted with a stone shower tray, a glass shower door and thermostatically controlled shower control. The ceiling mounted and handheld shower heads are generally by Dornbracht (or similar); towel rail with a heated section of natural stone for towel and bathroom warming.

Note: some variance occurs between apartments. Please refer to the sales team for individual apartment schedules for the bathrooms.

## SUPERIOR COMFORT

### Cooling and Heating

The comfort cooling is provided by a mechanical fan coil unit supplying cooled air to all principal rooms. The underfloor heating system provides heat throughout the apartment and is thermostatically controlled.<sup>2</sup>

The building is served by a development wide Combined Heat and Power Plant which provides metered hot water within the apartment.

### Lighting

Energy efficient LED downlights are fitted in the living areas, hallways, kitchens and bedrooms. 5 amp sockets are fitted to living areas and all bedrooms. Integrated LED lighting is provided in the master bedroom wardrobes. A fully automated and addressable lighting control system is provided for each room.

### Electrics

Living areas and bedrooms are fitted with a telephone point together with a TV outlet and are wired for satellite television and FM/DAB radio. The ceiling of the living area is pre-wired for installation of the purchaser's own speakers. Smoke detectors are fitted as standard.

### Home Automation System

Apartments are fitted with a Home Automation System incorporating a central touch screen with separate local scene setting controls to principal rooms. The system is designed to control lighting, heating and cooling (where applicable) and interfaces with the door entry intercom, security access and panic alarm systems.

The Home Automation System has the provision to be upgraded (by and at the purchaser's own cost) to incorporate controls for an audio/visual system, window blind mechanism and remote wi-fi access.

## TRANQUIL GARDENS

### External

The ground level hard and soft landscaping has integrated planting and feature lighting which is designed by a specialist landscape architect.

### Management and Security

Estate Managers are employed to provide a 24 hour concierge service as well as security patrols. A CCTV system with a centralised security monitoring facility provides cover for the whole estate.

## SUPERIOR FACILITIES

### Leisure and Spa Facilities

A fully equipped gymnasium and exercise area with indoor swimming pool is provided for residents' private use.<sup>3</sup>

### Restaurants and Retail

Public accessed, commercially operated waterside restaurant and coffee bar with ancillary shops are located within the Metropolitan Building, subject to lease.

### Parking

Secure underground parking is located underneath the development and is available at an additional cost (subject to availability).

Notes:

1. Variances occur between apartment types. Please refer to the sales team for individual apartment schedules. Please note that all aspects of the design for the Tower West are constantly under review. CK Asset Holdings Limited reserves the right to alter the design and substitute any item within the specification for a similar or improved product.

2. The comfort cooling system is designed to provide an ambient temperature within the apartment for the majority of normal external temperatures. This may not be achieved in extreme temperature conditions.

3. Leisure facilities are to be developed in conjunction with the piazza and will be available upon completion of the Tower East.

4. The apartment specification is subject to change.



Chelsea Waterfront Sales Suite  
90 Lots Road  
London SW10

chelseawaterfront.com



SALES AGENTS



+44 (0)20 7352 8852



Member of CK Asset Group 長江實業集團成員

+852 2128 7128

This brochure and the information contained in it does not form part of any contract, and while reasonable effort has been made to ensure accuracy, this cannot be guaranteed and no representation or warranty is made in that regard. Development and apartment designs and layouts are indicative only and may change. The specification of the apartments is the anticipated specification at the date this brochure was prepared, but may be subject to change in accordance with permitted variances under the apartment sale contracts. Dimensions shown in any text or plan are approximate sizes only and actual sizes may be different once constructed (although it is not anticipated that any apartments will be reduced by more than 5% in size). Computer Generated Images and photos are indicative only and may have been enhanced. Photos, images, drawings and perspectives contained in this brochure may not relate to the development and may not accurately reflect the completed development. All sales remain subject to contract. All information regarding prospective commercial or retail tenants represents current intention only and the final identity and/or nature of the tenants may change. The facilities and services (including, but not exclusively, the health club, restaurants, shops, etc) may not be available at the date of completion. Wall, ceiling and floor finishes, furniture and lighting shown in Computer Generated Images and photos are not included in sales and layouts may differ. Chelsea Waterfront and the building names are marketing names only and will not necessarily form part of the approved postal address and may change. Neither the agents nor any person in their employ has any authority to make or give any representation, warranty or guarantee (whether written or oral) in respect of or in relation to the development (or any parts thereof). We strongly recommend all parties visit and inspect the development site to understand its surrounding areas and environment.



